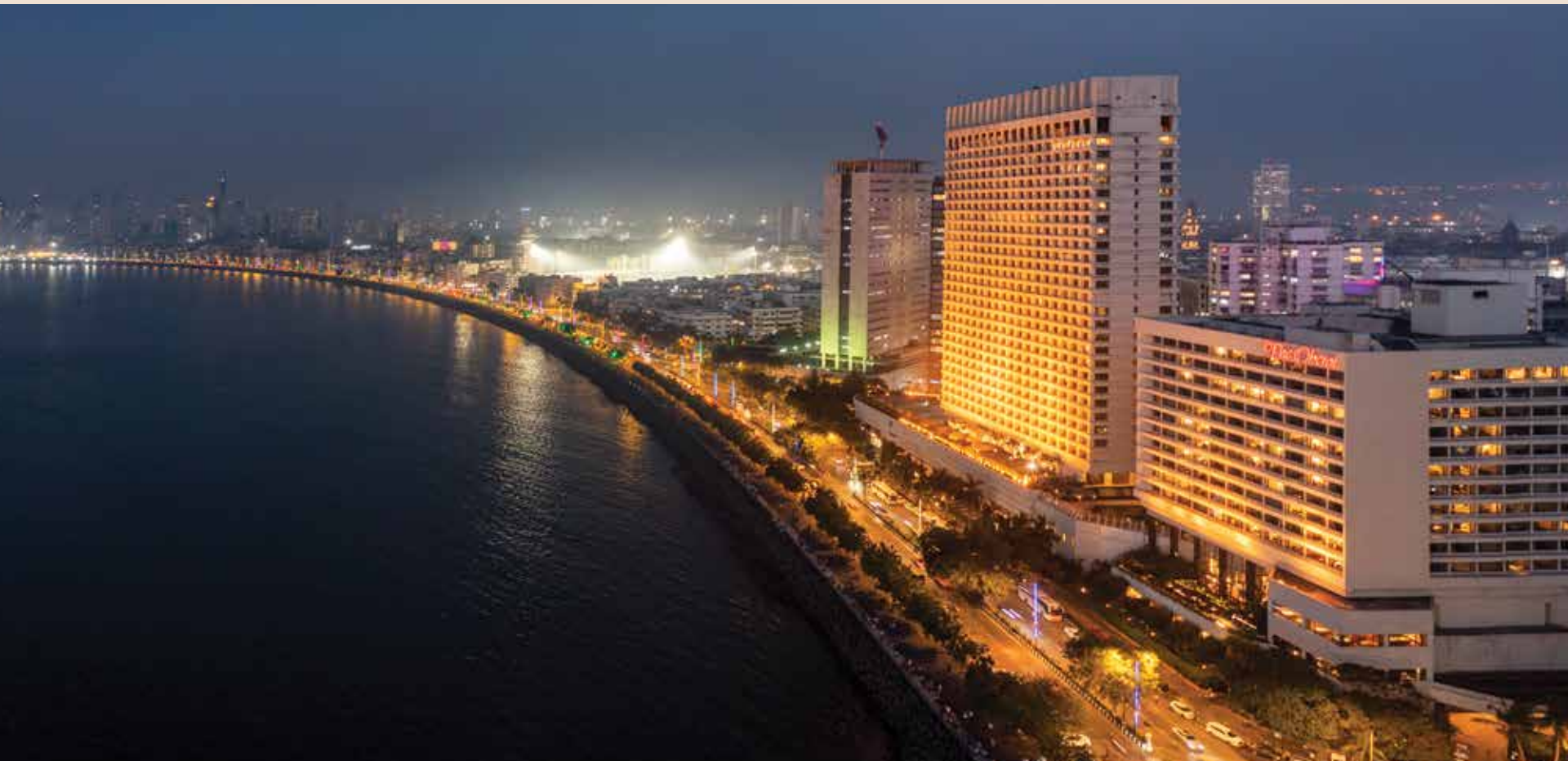




Welcome home to our genuine hospitality.





## The Oberoi Residential Suites, Mumbai

Welcome to The Oberoi Residential Suites and begin your journey into elevated living. Located in the heart of South Mumbai at one of the city's most iconic locations, The Oberoi, Mumbai, offers contemporary style, exceptional facilities and the legendary Oberoi heartfelt hospitality. Whether you choose to immerse yourself in the city's vibrant pulse or find tranquillity in your own serviced luxury residential suite, it will be our pleasure to welcome you to a truly personalised experience at the most exclusive address in Mumbai.





## The Location

The Oberoi Residential Suites, Mumbai are perfectly placed at Nariman Point on Marine Drive. Enjoy breathtaking scenery of the Arabian Ocean and lights sparkling along the shoreline. Step out to experience Mumbai's exciting entertainment or curl up in the comfort of your luxury abode.

The Oberoi Residential Suites, Mumbai are 25 kilometres or approximately 1 hour by car from Mumbai's airport terminals.

Scan the QR code for the location.





## The Design

The Oberoi Residential Suites, Mumbai are comfortable, sophisticated living spaces that blend modern convenience with a relaxing ambience. The interiors are exquisite expressions of contemporary aesthetics; a calming palette of smooth greys, rich browns and deep teal is punctuated with colourful articulations of modern art. All complemented by tranquil ocean views or exciting cityscape vistas framed by floor-to-ceiling windows.

The Oberoi Residential Suites, Mumbai are perfect for professionals, families and long-staying guests.





### The Accommodation

The Oberoi Residential Suites, Mumbai redefines modern and urban luxury living. The spacious homes offer unrivalled views of the Arabian Ocean and Mumbai's vibrant cityscape. Floor-to-ceiling windows afford plentiful natural light. Residents also enjoy exclusive access to the facilities and services at The Oberoi, Mumbai.





#### Living room

- L-shaped sofa
- Rollable flatscreen TV
- Centre and side tables
- Bookshelves
- Storage space

#### Dining area

- 4/6-seater table and chairs
- Storage space

#### Kitchen

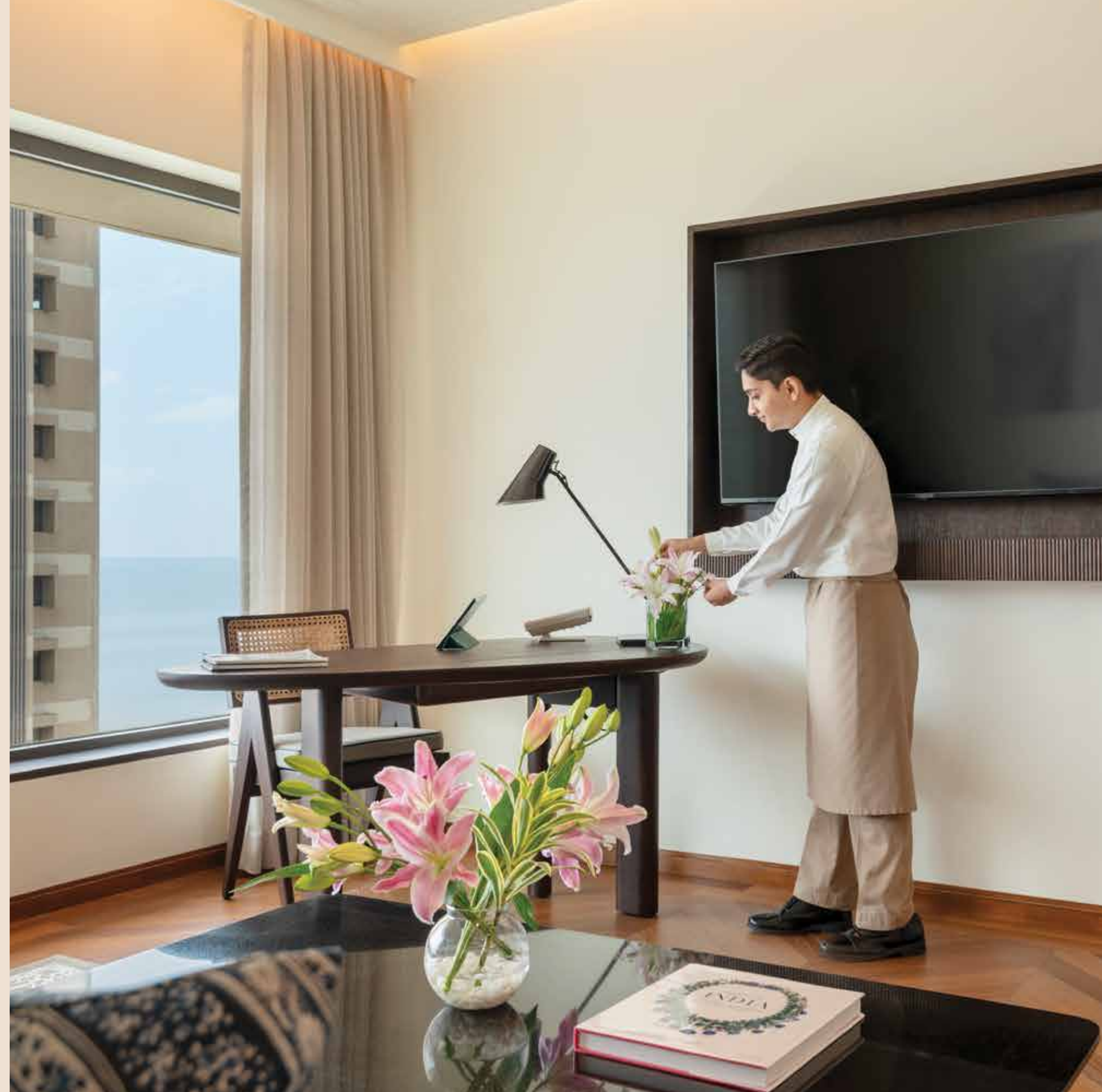
- Convection oven
- Microwave
- Dishwasher
- Refrigerator
- Wine storage
- Storage cabinets
- Cookware, crockery and cutlery
- Basic cooking necessities

#### Master bedroom

- Emperor sized bed
- Dressing area
- Walk-in wardrobe
- Private study
- Flatscreen TV

#### Bathroom

- Shower cubicle
- Vanity counter
- Private lavatory alcove
- Separate powder room

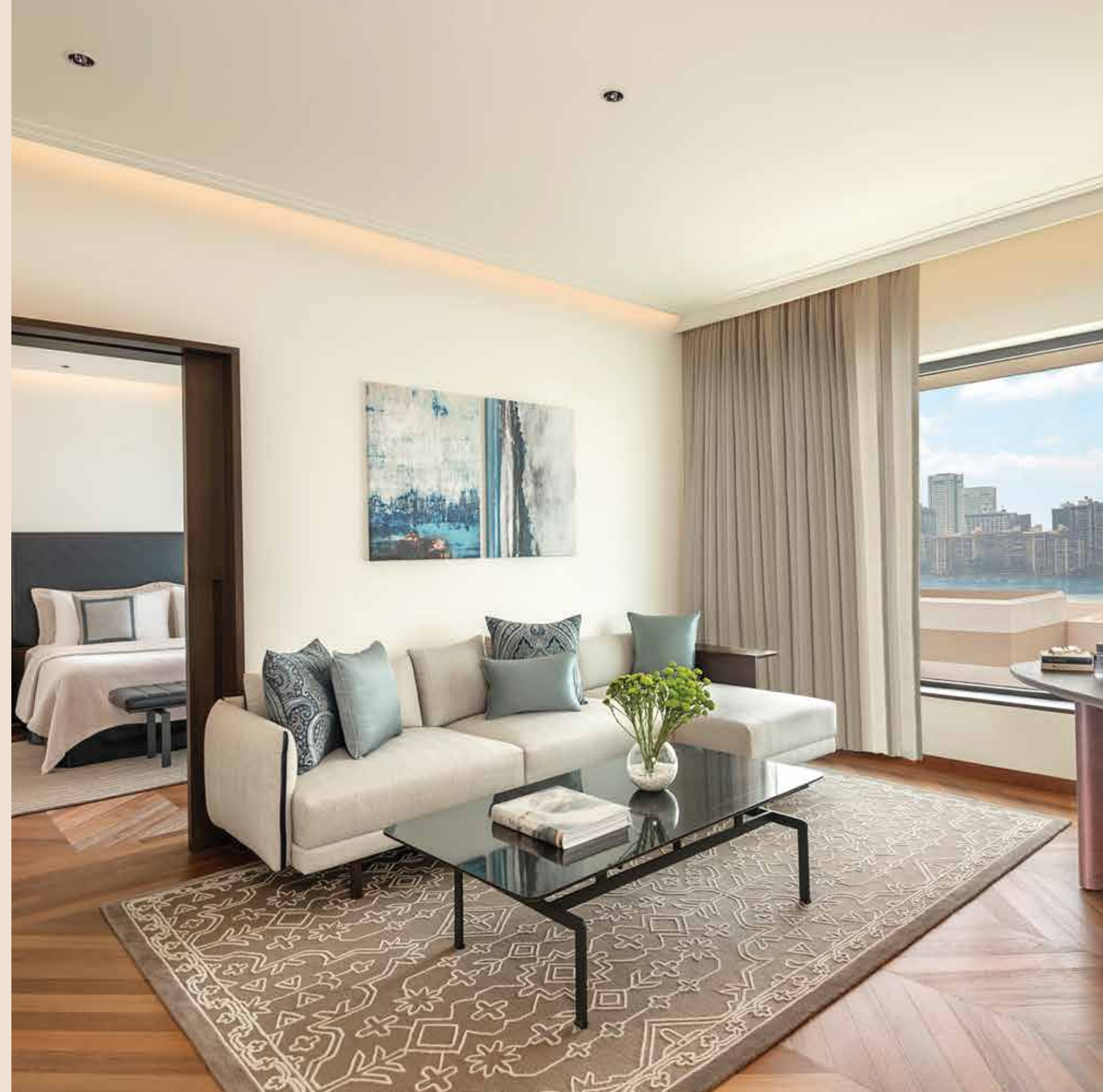




## Bay View Residential Suite

Indulge in the epitome of sophistication. These spacious one-bedroom residential suites with a private study room redefines modern elegance, seamlessly blending contemporary aesthetics with personalised services. The 113 square metres space includes a master bedroom, a private study and an ensuite bathroom with a separate dressing area. The expansive living room, adorned with colourful modern art, offers stunning ocean views through floor-to-ceiling windows. A private oasis of comfort, complemented by the legendary Oberoi hospitality.

Bay View Residential Suite can be combined with an extra bedroom unit of 37 square metres.





## Luxury Residential Suite

Step into a realm of urban opulence as these generously sized residential suites, spanning 90 square metres, offers exciting cityscape views. Adorned in soothing hues, each apartment features a master bedroom, an ensuite bathroom and comfortable living, dining and kitchen spaces. The design incorporates ample storage, a private dressing area and a study space, ensuring every aspect is meticulously crafted for your comfort. These residential suites enhance your everyday experience with Oberoi's warm, personalised service that is quintessentially Oberoi.

Luxury Residential Suite offer the option to add a second bedroom unit of 33 square metres.





## Amenities

- Butler service
- Concierge
- Valet service
- Internet access
- 24-hour in-room dining service
- Private parking space
- Doctor-on-call

### Exclusive facilities offered by The Oberoi, Mumbai

- The Oberoi Spa
- Oberoi One Platinum Membership
- Access to all restaurants at the hotel and The Eau Bar
- Swimming pool
- 24-hour fitness centre



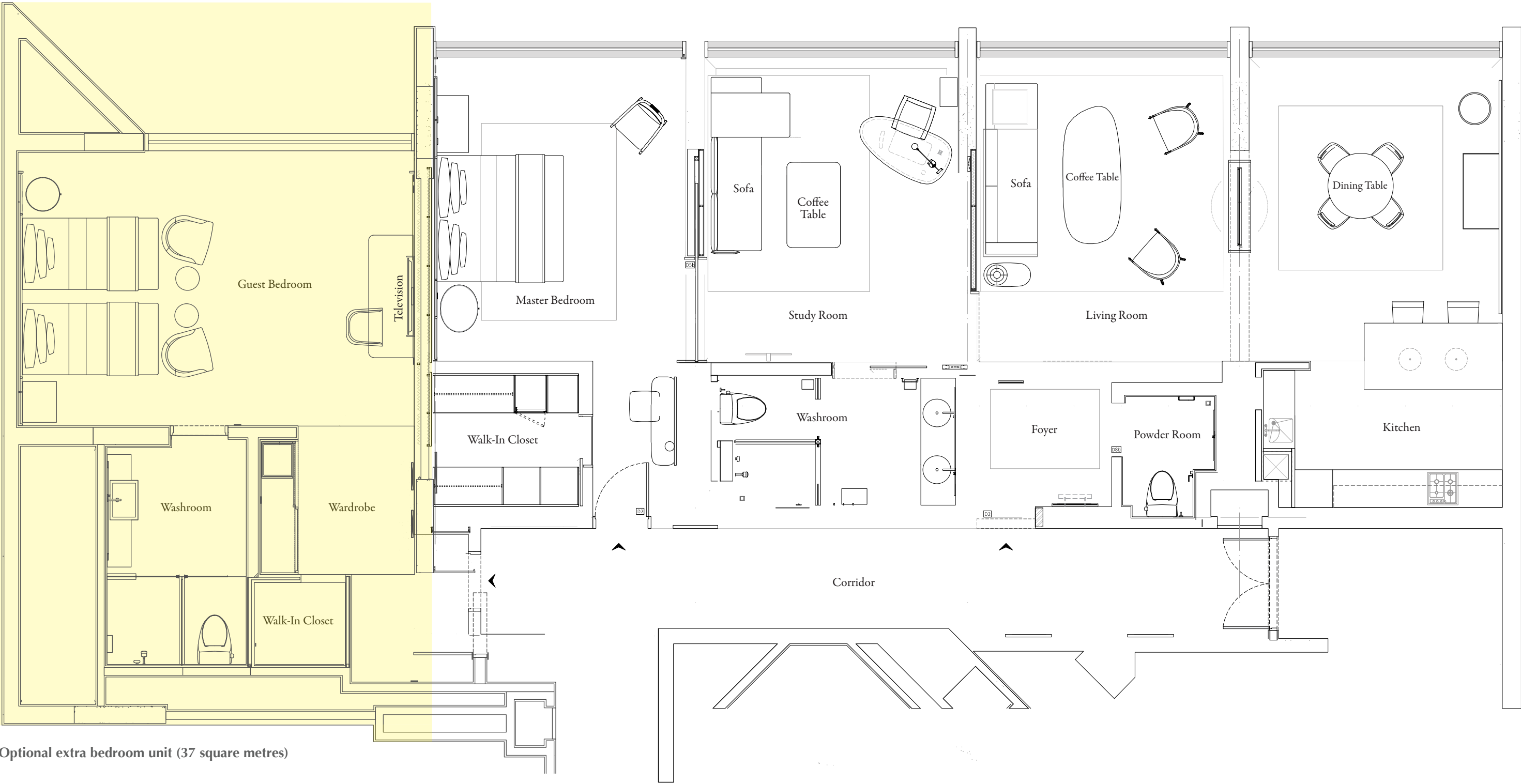


## Mumbai

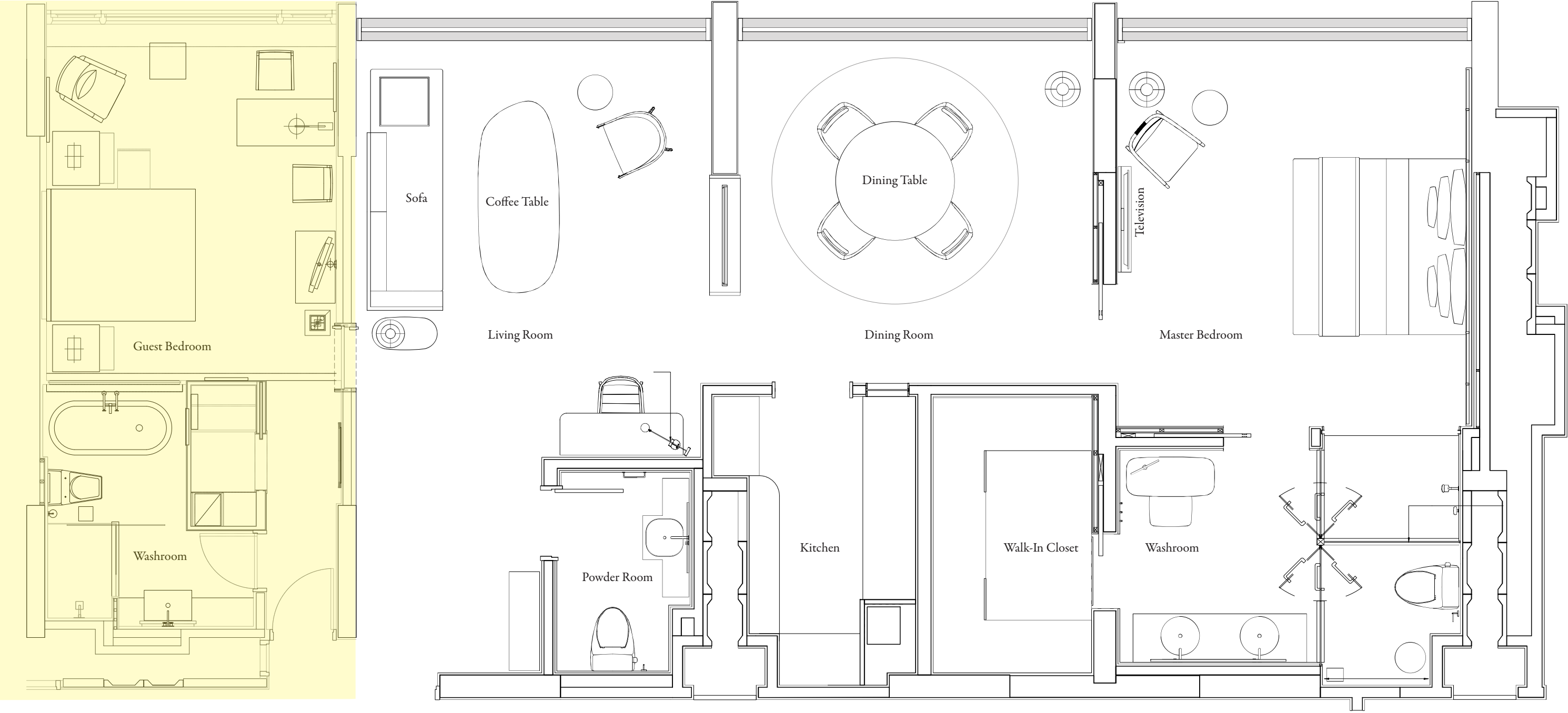
Mumbai is a conglomeration of several islands that are linked by bridges, causeways and framed by a wide natural harbour that opens onto the Arabian Ocean. A thriving commercial capital, Mumbai is also home to Bollywood, one of the largest centres of film production in the world. Some of the best places to visit in Mumbai include the Gateway of India, the Elephanta Caves, the art galleries along Kala Ghoda, Mani Bhavan Gandhi Sangrahalaya and Chhatrapati Shivaji Maharaj Vastu Sangrahalaya, or the Prince of Wales Museum of Western India. All of which are within easy distance of The Oberoi Residential Suites, Mumbai.



Bay View Residential Suite



Luxury Residential Suite



Optional extra bedroom unit (33 square metres)

Corridor



For reservations or other queries, you can reach at 1800 108 0606 or  
mail us at [residentialsuites@oberoigroup.com](mailto:residentialsuites@oberoigroup.com)